



## 13 Taisho Court WERRIBEE VIC

4 2 5

Located in a family friendly pocket nearby to schools, shops & public transport this brilliantly designed home has been updated throughout, is perfectly presented and provides a long list of features that would make any new owner super comfortable to live here.

**Building Size** : 17 sqm  
**Land Size** : 531 sqm  
**View** : <https://www.ypa.com.au/7361186>

With updates and extras done throughout, the home is spaciouly designed with a lot of versatile options. Situated on a spacious allotment of approximately 530 sq m with plenty of backyard space the home offers:

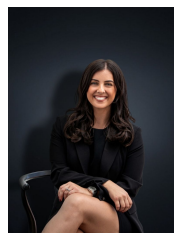
Four bedrooms (fourth has been converted and could also be used as extra space for the second living area)

Formal sitting area upon entry

Master bedroom with walk in robe, ensuite and large dressing room or study

Two remaining bedrooms with built in robes

Renovated kitchen with loads of cupboard, space stainless



**Kirsty Cunningham**  
0414 344 475