



## 37 Mossfiel Drive HOPPERS CROSSING VIC

3 1 3

Escape to this private residence with beautifully landscaped gardens, open spaces and an enviable position in Hoppers Crossing. Wonderfully set within one of the most central locations that Hoppers Crossing has on offer within the Mossfiel estate, this home sits you within walking distance to reputable schools, bus stops, parklands, sporting clubs and most importantly Pacific Werribee (Approx. 1.3km) and Hoppers Crossing Train Station (Approx. 1.4km).

Sitting on a spacious allotment of approximately 628 sq m this home offers you:

Three spacious bedrooms

Central updated bathroom

Formal lounge with adjacent formal dining room/study area

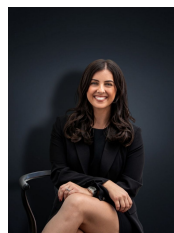
Updated kitchen with quality appliances, loads of storage, plenty of cupboard space and overlooking the rumpus room

Large Rumpus room/Informal living area

**Building Size** : 16 sqm

**Land Size** : 628 sqm

**View** : <https://www.ypa.com.au/7361185>



**Kirsty Cunningham**  
0414 344 475