



46 Pannam Drive HOPPERS CROSSING VIC

3  2  1 

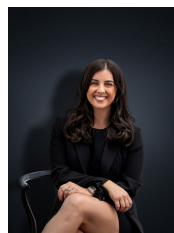
Located in a brilliant Hoppers Crossing position this extremely well looked after and loved home is sure to impress the most astute buyers from owner occupiers to investors alike.

With impressive updates completed throughout the home and presentation being nothing but pristine the property is situated on a large allotment of approximately 599 sq m.

With location being ever so central you are only 550m (approx.) to Hoppers Crossing Secondary College, 500m (approx.) to Hoppers Crossing Sports Club & Goodlife Health Club, 2.9km (approx.) to Pacific Werribee, 2.2km (approx.) to Hoppers Crossing Train Station and within walking distance to parks, bus stops & local shops.

The home offers:

Building Size : 16 sqm
Land Size : 599 sqm
View : <https://www.ypa.com.au/7361172>



Kirsty Cunningham
0414 344 475