



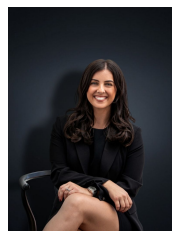
4 Pinaroo Court WYNDHAM VALE VIC

4 2 1

Situated in a quiet court location this is a perfect opportunity for any smart investor or first home buyer to purchase a well presented home in the popular and growing city of Wyndham. Situated on approximately a 601m² allotment the home is within close distance to reputable schools, kindergartens, parklands, local shops and only a 9 minute drive to Wyndham Vale Train Station.

Building Size : 20 sqm
Land Size : 601 sqm
View : <https://www.ypa.com.au/7361147>

The time to buy here is now and the home offers:
 Three spacious bedrooms with built in robes
 Master bedroom with large walk in wardrobe and en suite
 Formal lounge upon entry with wood fire heater
 Rumpus to the back of the home
 Kitchen & adjacent meals area
 Timber floorboards throughout
 Large outdoor pergola area
 Single carport with roller door



Kirsty Cunningham
 0414 344 475