



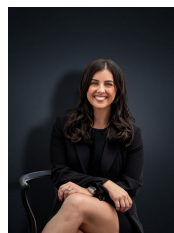
17 Elmslie Street WYNDHAM VALE VIC

3  2  2 

Situated in the well-established Bluestone Green estate this home is a perfect start for any young family with parklands, bus stops, schools and local shopping all within walking distance from your front entrance! With Wyndham Vale Train Station and Manor Lakes Shopping centre only 2.6km (approx.) away the lifestyle provided here is nothing short of simple. Situated on approximately 422 sq m with many upgrades throughout the home, and spacious entertaining zones both inside and out, the property provides you with:

Building Size : 16 sqm
Land Size : 422 sqm
View : <https://www.ypa.com.au/7361146>

- Three spacious bedrooms
- Large central bathroom
- Master bedroom with ensuite and walk in robe
- Hostess kitchen with stainless steel appliances & dishwasher
- Open plan kitchen/meals and family living space



Kirsty Cunningham
0414 344 475