



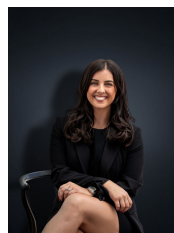
## 302 Tarneit Road WERRIBEE VIC

3 2 2

When an opportunity comes about that you MUST take advantage of you simply need to act fast! If you are looking for exposure from your property to run a home business etc. then there is no better position than here! Situated in a brilliant pocket within walking distance to Pacific Werribee (approx. 1.6km), a short drive to Werribee CBD & Train Station (approx. 3.2km), bus stops only meters away from your front door and reputable schools including Westgrove Primary & Bethany Primary are both within walking distance as well. Previously used as a display home, this has got everything you could ever need in a property, owned by the first owners the impeccable presentation throughout is a true credit to them. Situated on a large allotment of approximately 650 sq m, the property includes:

- Formal lounge upon entry with ceiling roses
- Master bedroom with ensuite and walk in robe
- Remaining bedrooms all spacious and fitted with built in

**Building Size** : 25 sqm  
**Land Size** : 648 sqm  
**View** : <https://www.ypa.com.au/7361129>



**Kirsty Cunningham**  
0414 344 475