

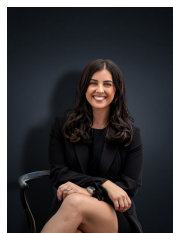


## 6 Moubray Court WERRIBEE VIC

4 2 2

Positioned in a perfect court location, this character filled home is sure to tick every box that your family is looking for. With Wyndhams most prestigious schools including MacKillop College, Werribee High School, Corpus Christi & Werribee Primary all within walking distance this home is sure to suit the fussiest of buyers. Not only are the schools on offer a huge bonus but this location sets you within walking distance to Werribee CBD (approx 1.8km away), Train Station, Restaurants and Shops, bust stops, parklands & walking tracks. Werribees most visited attractions including Werribee Park & Mansion, Open Range Zoo & Shadowfax Winery are also only approximately 5-7 minutes away from your home, even closer is the freeway access to reach Melbourne CBD within 30km. The home has been proudly presented to the market today offering its next owners:

**Building Size** : 2 sqm  
**Land Size** : 708 sqm  
**View** : <https://www.ypa.com.au/7361043>



**Kirsty Cunningham**  
0414 344 475

Four massive bedrooms (all with built in robes)