



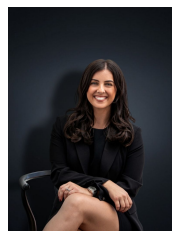
50 Cottrell Street WERRIBEE VIC

3  3  1 

Located on a few moments away from the Watton Street precinct & Werribee Train Station this exceptional opportunity is sure to suit first home owners and investors alike! With the plans in place for Werribee this home sets you in the heart of the activity centre zoning, where every purchaser wants to be, it luckily positions you around million-dollar homes! With beautiful presentation throughout the townhouse offers;

Building Size : 17 sqm
Land Size : 211 sqm
View : <https://www.ypa.com.au/7361019>

- Three large bedrooms with built in robes
- Master with en suite and walk in robe
- Study nook
- Formal lounge upon entry
- Kitchen/meals and family living arrangement
- Stainless steel appliances and dishwasher
- Brand new timber floorboards
- Heating and cooling
- Private courtyard for entertaining



Kirsty Cunningham
0414 344 475