



## 56 Aldridge Road WYNDHAM VALE VIC

4 2 2

In a booming location this family abode provides more than any family could ever ask for. With exceptional attention to detail throughout the home, this home is a blend of grandeur, opulence, modern design, comfort, luxury and warmth. Within walking distance to Wyndham Vale primary school, childcare, bus stops & parklands. Strategically located within proximity to Wyndham Vale Railway Station (only 6 minutes away) and Werribee Railway Station (only 9 minutes away). Conveniently located near Greens Road Shopping Complex and Werribee City Centre (shopping precinct). With large living spaces throughout the home offers its next proud owner:

- 4 large bedrooms (Master bedroom with expansive walk in robe and ensuite with double shower and separate toilet), remaining bedrooms with built in robes.

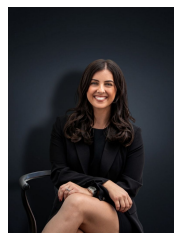
- Separate study upon entry

- Large formal lounge (theatre room)

**Building Size** : 28 sqm

**Land Size** : 700 sqm

**View** : <https://www.ypa.com.au/7360975>



**Kirsty Cunningham**  
0414 344 475