



10 Oxford Way WYNDHAM VALE VIC

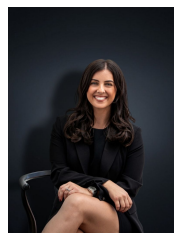
3  2  1 

Styled and presented to perfection this spotless family home provides space for the growing family. Nestled in a quiet pocket of Wyndham Vale the home is within walking distance to local shops, Wyndham Vale Primary School, Iramoo Primary School, Parklands, Walking tracks and only a 7 minute drive to the conveniently located Wyndham Vale Railway station.

The corner allotment of approximately 560 sq m provides endless potential and the magnificent double brick home offers:

- Three spacious bedrooms, all with built in robes
- Master bedroom with ensuite
- Formal lounge upon entry with gas log fireplace
- Open plan kitchen/ Meals & family living arrangement
- Outdoor covered entertaining area
- Solar heated in ground pool
- Single and a half garage (with built in office space)

Building Size : 15 sqm
Land Size : 560 sqm
View : <https://www.ypa.com.au/7360935>



Kirsty Cunningham
0414 344 475