



## 24 Don Avenue HOPPERS CROSSING VIC

4 2 2

This wonderfully presented home is now waiting for its next lucky owner! Positioned in central Hoppers crossing in the well-established Mossfiel Estate, this home offers amazing presentation and a flowing floor plan to provide a spacious abode to suit any young family or investor alike. Located close by to local Primary & Secondary schools, sporting clubs, Hoppers Club, public transport, Pacific Werribee and all other local amenities, this home offers a solid foundation and a large allotment of 572sqm (approx.). This impeccably maintained home offers:

Large master with en suite, built in robe and parents retreat

Three other bedrooms

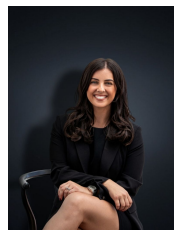
Updated Kitchen overlooking the meals and family arrangement

Established Gardens

Double Carport and a rear workshop thats fully lined and

**Land Size** : 572 sqm

**View** : <https://www.ypa.com.au/7360912>



**Kirsty Cunningham**  
0414 344 475