



103 Wilmington Avenue HOPPERS CROSSING VIC

5 🛏 3 🚿 2 🚗

This beautifully maintained family home, perfectly located in the well-established Cambridge Estate presents easy access to all amenities right from your doorstep! Located just minutes away from Cambridge Primary School, public transport, local parklands and the newly renovated Pacific Werribee Shopping centre, this sensational 5-bedroom home offers loads of potential to suit any large family or families alike. Situated on a large 565sqm allotment (approx.), this spaciouly designed family home with a flowing floor plan offers:

Two master bedrooms with their own private ensuite and WIR

Three additional large bedrooms all with BIR

Formal lounge upon entry

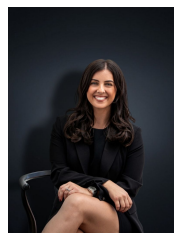
Kitchen/Meals and family living arrangement

The Designer kitchen offers quality premium appliances with loads of storage space & a SMEG electric wall oven

Building Size : 40 sqm

Land Size : 565 sqm

View : <https://www.ypa.com.au/7360905>



Kirsty Cunningham

0414 344 475