



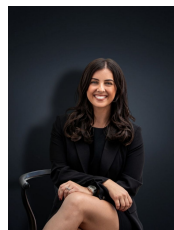
## 9 Kestrel Place WERRIBEE VIC

3  1  3 

Located in a central pocket of Werribee within walking distance to public transport & Pacific Werribee this neat and tidy home would make the ideal investment or perfect first home! Within close proximity to local parks, schools and only a short drive to Werribee CBD & Train station everything that you will ever need is within easy reach. Situated on a sizeable 575 sq m allotment the home in pristine condition offers:

**Land Size** : 575 sqm  
**View** : <https://www.ypa.com.au/7360863>

- Three bedrooms
- Master bedroom with walk in robe
- Central bathroom
- Kitchen / meals and family living arrangement
- Kitchen with gas cooking appliances & dishwasher
- Large pergola and outdoor entertaining area
- Double garage with rear access to an additional single carport (or extra pergola space)



**Kirsty Cunningham**  
0414 344 475