

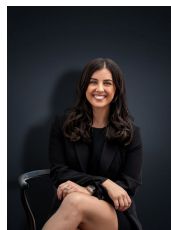


50 Canberra Avenue HOPPERS CROSSING VIC

3 1 1

This exciting family home is situated on a corner allotment of approximately 530 sq m in arguably one of Hoppers Crossings best and most popular pockets. The home has been smartly designed and offers a long list of potentials the immaculate presentation is only one of the things that you will appreciate but the location is second certainly one to get excited about. Within 1km you have Pacific Werribee & Aqua Pulse and approximately 1.7km from the home is the Hoppers Crossing train station & freeway access. Not to mention, local shops, reputable schools and parklands all within walking distance from your front door. The freshly updated property offers:

Land Size : 530 sqm
View : <https://www.ypa.com.au/7360827>



Kirsty Cunningham
 0414 344 475

- 3 large bedrooms with built in robes
- Massive lounge with adjacent formal dining room
- Renovated Kitchen with quality appliances
- Central modernized bathroom
- Ceiling fans