



4 Normandy Close HOPPERS CROSSING VIC

3 2 2

Yes! You read it right, situated on approximately 664 sq m this spacious home offers the complete package. Located in a super central pocket of Hoppers Crossing you are right nearby to reputable schools, local shops, public transport, Tarneit West Shopping Centre and only 3km to Pacific Werribee Shopping Centre. The home is situated in a quiet court location and is also close to Parklands for the kids to run around.

If you are looking for a secure investment property then this is it! Being securely leased until November 2017 there is no work to be done here! The home itself offers;

Three bedrooms plus a separate study (can be used as a fourth bedroom)

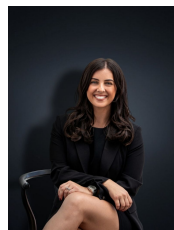
Large lounge room with adjacent formal dining area

Spacious kitchen/ meals arrangement with quality appliances including dishwasher

Rumpus room overlooking the backyard

Land Size : 664 sqm

View : <https://www.ypa.com.au/7360801>



Kirsty Cunningham
0414 344 475