



## 6 Bernhardt Avenue HOPPERS CROSSING VIC

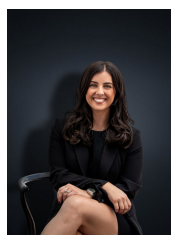
3 1 4

Located in the very popular Woodville estate, close to all amenities such as local shops, schools, walking distance to Hoppers Crossing train station and only 5 minutes drive to Pacific Werribee Shopping Centre this property is perfect for a first home buyer or savvy investor.

**Building Size** : 20 sqm  
**Land Size** : 620 sqm  
**View** : <https://www.ypa.com.au/7360745>

Situated on a very comfortable approx. 620m2 block, there is definitely plenty of room for a growing family. The home in its original condition boasts plenty of features throughout including unrestricted side access and has thriving potential for anyone looking to do a renovation project.

The property presents;



**Kirsty Cunningham**  
0414 344 475

- 3 Large Bedrooms
- Spacious lounge room
- Separate study/ could be used as a potential fourth