



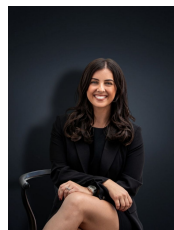
27 Smeaton Avenue HOPPERS CROSSING VIC

3  2 

Perfectly located in the central and popular Mossfiel estate this home presents easy access to all amenities right from your doorstep! Close by to Primary & Secondary schools (within walking distance to St Peters Primary school), Kindergartens, Sporting clubs, community gyms, local shops, public transport, and less than a 5 minute drive to the newly renovated Pacific Werribee. The home has been renovated throughout and promotes loads of potential due to position, situated on approximately 554sq m and offers the following:

- Four bedrooms with built in robes
- Master bedroom with en suite
- Large central bathroom
- Kitchen/meals area which has been renovated with quality stainless steel appliances
- Massive formal lounge upon entry
- Separate living area to the back of the property (teenage

Building Size : 18 sqm
Land Size : 542 sqm
View : <https://www.ypa.com.au/7360704>



Kirsty Cunningham
0414 344 475