



11 Haideh Court HOPPERS CROSSING VIC

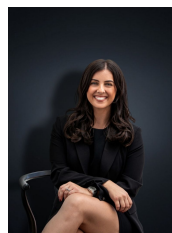
4 1 2

There is not much more that could be added into this immaculate family friendly home that is situated in a central pocket of Hoppers Crossing, on a whopping 655sq m block (approx.)! The home is sure to suit any loving family or savvy investor. With plenty of room inside & out the home is within close proximity to Primary & Secondary schools, close by to local shops, community gyms, Public transport (With Hoppers Crossing train station less than a 5 minute drive from the home), and within easy access to the Freeway. Being renovated throughout this incredibly well presented property offers:

Building Size : 16 sqm
Land Size : 656 sqm
View : <https://www.ypa.com.au/7360697>

- Four bedrooms
- Master Bedroom with walk in robe and access to a central, renovated two-way bathroom
- Formal Lounge

Open plan kitchen/meals area which looks out to the enormous decked pergola and entertaining space



Kirsty Cunningham
0414 344 475