



35 Melview Drive WYNDHAM VALE VIC

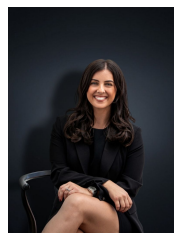
4  2  4 

An amazing opportunity to secure a perfect investment property, or stunning 1st home with all the bells and whistles.

Positioned in a quiet central location close to schools, parklands, public transport and shops with Bluestone Shopping Centre just a few minutes away.

- Shimmering polished timber floors through out
- Four bedrooms, main with en suite
- Open plan lounge room leading through to the meals area
- Modern hostess kitchen with Built In Pantrys, stainless appliances and dishwasher
- Modern gas wall furnace, split system air conditioning
- Sand stone paved pergola area
- Double carport, a single carport and an oversized man cave/workshop/garage

Building Size : 16 sqm
Land Size : 565 sqm
View : <https://www.ypa.com.au/7360695>



Kirsty Cunningham
0414 344 475