



## 12 Picardy Court HOPPERS CROSSING VIC

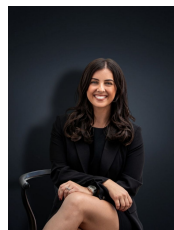
4  2  2 

Presenting this spectacular family home, nestled in a quiet court on approximately 726 m<sup>2</sup>, this beautifully maintained home offers loads of potential to suit any loving family. With plenty of room inside & outside, the home is within close proximity to loads of amenities including Primary & Secondary schools (Less than a 5 minute walk to The Grange P-12 College), close by to Hogans Corner Shopping Centre, Sporting clubs, public transport and within minutes to the newly renovated Pacific Werribee. The flowing floor plan with its multiple living zones offers:

- Four bedrooms; master with en suite and walk in robe
- Remaining three bedrooms all with built in robes
- Central bathroom
- Magnificent Kitchen area overlooking the meals and family living arrangement
- Separate formal living space with a built in bar perfect for entertaining

**Land Size** : 726 sqm

**View** : <https://www.ypa.com.au/7360681>



**Kirsty Cunningham**  
0414 344 475