



9 Manning Circuit TARNEIT VIC

3  2  2 

This newly built, corner property, which is only two years old, offers loads of potential with a spacious floor plan to suit any loving family. Located in the central pocket of Tarneit, Close by to Primary & Secondary schools, within walking distance to Baden Powell College, Local Shopping and Childcare Centers, public transport (only 800m to Bus stop from the property) and less than a 5 minute drive to Tarneit Train Station, as well as easy access to M1 Freeway. This immaculate family home, offers;

- Large Master Bedroom including walk in robe and ensuite
- Two remaining bedrooms including built in robes
- Two bathrooms

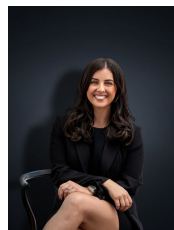
Kitchen overlooking the formal dining and family living arrangement

Double Remote Lock up Garage

Quality fittings include- ducted heating, evaporative cooling, floorboards, stone benchtops, splash back,

Land Size : 352 sqm

View : <https://www.ypa.com.au/7360649>



Kirsty Cunningham
0414 344 475