



## 38 Priestley Avenue HOPPERS CROSSING VIC

4 2 5

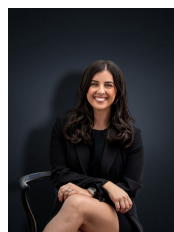
This classic double story home on a corner block of approximately 602m<sup>2</sup> offers loads of potential, and is the most versatile property on the market today. Situated in a quiet and desirable street of Hoppers Crossing, close by to primary & secondary schools, public transport (Hoppers Crossing station less than a 5 minute drive from the property), local shops, sports clubs, and community gyms and within minutes to the newly renovated Pacific Werribee. This property is a unique opportunity that will provide you with multiple choices for investors, renovators and large families alike. The home consist of:

**Land Size** : 602 sqm

**View** : <https://www.ypa.com.au/7360647>

- Large master bedroom with ensuite
- Three fitted bedrooms with built in robes
- Central bathroom
- Formal lounge

Kitchen overlooking the large meals and family living arrangement



**Kirsty Cunningham**  
0414 344 475