

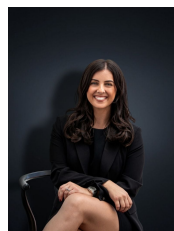
91 Bethany Road HOPPERS CROSSING VIC

3  1  1 

This beautifully maintained property offers loads of potential and a flowing floor plan to provide a spacious abode to suit any young family! Located in a central pocket of Hoppers Crossing close by to Primary & Secondary schools, public transport (bus stop only 95m from the property), local shops and only a short drive to Pacific Werribee. Impeccably maintained by the current owners the property offers;

- Three fitted bedrooms
- Large master suite with walk in robe
- Central bathroom with two way access from the master
- Separate formal lounge upon entry
- Kitchen overlooking the large meals and family living arrangement
- Single garage with rear drive through access for another two cars
- Large pergola overlooking the outdoor entertaining area

Building Size : 15 sqm
Land Size : 571 sqm
View : <https://www.ypa.com.au/7360632>



Kirsty Cunningham
0414 344 475