



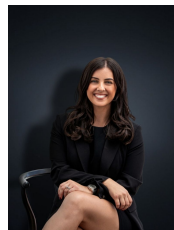
22 Geddes Crescent HOPPERS CROSSING VIC

3 2 2

Situated only 850m from Pacific Werribee this is an ideal property for someone looking specifically for the best LOCATION in town! Nearby to St Peters Primary School, Hoppers Crossing secondary College, Hoppers Crossing Train station & located directly opposite parklands this fantastic opportunity offers huge potential & for the purchasers wanting to either invest or renovate look no further, the home currently entails:

- Three bedrooms
 - Master bedroom with en suite and BIR
 - Large formal lounge
 - Kitchen/meals area with upright stove
 - Central bathroom
 - Gas wall furnace & split system
 - Floorboards
 - 2 car carport with access to the huge backyard
- (PHOTO ID REQUIRED AT OPEN FOR INSPECTION)

Price : \$ 450,000
Building Size : 15 sqm
Land Size : 647 sqm
View : <https://www.ypa.com.au/7360617>



Kirsty Cunningham
0414 344 475