



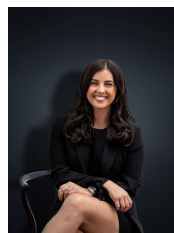
## 21 Connor Place HOPPERS CROSSING VIC

3  1  1 

Located in the renowned Cambridge estate this impeccably presented three bedroom home is sure to suit many purchasers whether you are looking to downsize, purchase your first home or add to any investment portfolio! Located on a superb corner site with potential for unrestricted side access and within walking distance to the very reputable Cambridge Primary school, local shops and public transport and within only a 5 minute drive to Pacific Werribee! Generously offering:

- Three bedrooms
- Central bathroom
- Kitchen/meals arrangement with a combination of gas & electric appliances
- Heating & cooling
- Single remote garage with rear access
- Established gardens
- Outside entertaining area with covered pergola

**Building Size** : 14 sqm  
**Land Size** : 436 sqm  
**View** : <https://www.ypa.com.au/7360584>



**Kirsty Cunningham**  
0414 344 475