



10 Shearwater Court HOPPERS CROSSING VIC

3  1  2 

Located in the centre of Hoppers Crossing only a short distance to Pacific Werribee & public transport, schools and local shops is this gold mine opportunity that will make you the envy of all your friends! Tucked away in a quiet court location this fully renovated home offers:

Three bedrooms

Central bathroom with two way access to the master bedroom

Open plan Kitchen/Meals and Family arrangement with stainless steel appliances

Floating floorboards

Freshly painted, Brand new carpets

Pergola overlooking the entire backyard

Whopping powered double garage to the rear of the home with 3 phase power

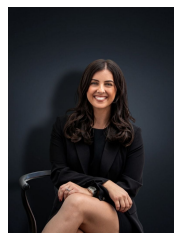
Side access

Heating & cooling

Building Size : 15 sqm

Land Size : 553 sqm

View : <https://www.ypa.com.au/7360580>



Kirsty Cunningham
0414 344 475