



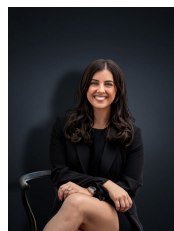
19 Bayview Crescent HOPPERS CROSSING VIC

3  2  2 

This well presented home in a lovely quiet street, is ideally positioned, within easy reach to schools, public transport, medical centres and the new Pacific Plaza shopping centre.

Building Size : 16 sqm
Land Size : 532 sqm
View : <https://www.ypa.com.au/7360522>

Master with mirrored BIR and semi en suite
Two other bedrooms with BIR
L shaped formal lounge and dining
Kitchen meals area overlooking spacious outdoor area
900mm gas cooktop, range hood and dishwasher
Central bathroom
Ducted heating evaporative cooling
Double lock up garage with air conditioned home office
Low maintenance manicured front and back yard with cubby and garden shed



Kirsty Cunningham
0414 344 475

This home is the perfect start for any first home buyer or