



25 Hamish Drive TARNEIT VIC

4  2  2 

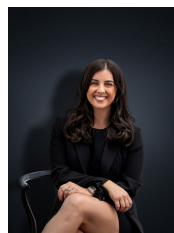
Located in the heart of Tarneit this perfect residence is ready for you to move on in. Within close proximity to Tarneit train station, shopping centres and reputable schools. Offering a low maintenance lifestyle this home entails:

Building Size : 22 sqm
Land Size : 357 sqm
View : <https://www.ypa.com.au/7360430>

- Four robed bedrooms
- Master with walk in robe and en suite
- Large kitchen with stainless steel appliances and dishwasher
- Massive open plan kitchen/meals and family living arrangement with adjacent formal lounge
- Low maintenance gardens
- Ducted heating
- Double remote garage

A home like this is sure to be taken fast, do not miss a fantastic opportunity!

(PHOTO ID REQUIRED AT OPEN FOR INSPECTION)



Kirsty Cunningham
0414 344 475