



20 Alsace Avenue HOPPERS CROSSING VIC

3  1  1 

If you aspire to live the easy life then you will fully appreciate what is on offer here! Nestled in a central area of Hoppers Crossing nearby to local shops, public transport, schools and only a short distance from the Werribee plaza everything is at easy reach.

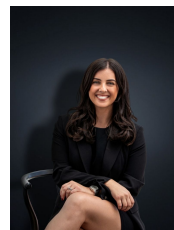
Upon entry is the formal lounge and master bedroom to the left with walk in robe. The remaining two bedrooms are also fitted with built in robes. Your kitchen includes stainless steel appliances and dishwasher, overlooking the meals and family living room. Outdoors entails a large pergola area and expansive backyard with plenty of room for the kids to play around.

Luxury appointments include 2 x split system air conditioning, gas wall furnace, floating floorboards and rear access from the single garage. Freshly painted and with brand new carpets also!

This outstanding family home is an opportunity for the

Land Size : 559 sqm

View : <https://www.ypa.com.au/7360196>



Kirsty Cunningham
0414 344 475