

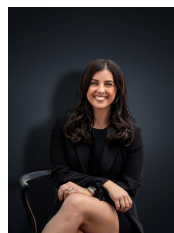


## 18 Riversdale Drive WERRIBEE VIC

4 2 2

This beautifully presented family home is located in a premier location with the majestic Werribee River at the end of the street, walking distance to park lands, schools, and only few minutes' drive to Watton Street and the Werribee Plaza. This bright and spacious four bedroom home (master with WIR and ensuite) offers an abundance of space and character with formal and informal living zones as well as a separate rumpus perfect for a pool table or home cinema. Extras include ducted heating, refrigerated cooling, large allotment of over 700m<sup>2</sup> with low maintenance, drought tolerant gardens and an above ground pool for those warmer months. With all local amenities at your finger tips and offering the complete package don't let this one slip by.  
( PHOTO ID REQUIRED AT OPEN FOR INSPECTION)

**Building Size** : 30 sqm  
**Land Size** : 702 sqm  
**View** : <https://www.ypa.com.au/7360040>



**Kirsty Cunningham**  
0414 344 475

At YPA Estate Agents 'our service will move you'