



## 5 Waterside Close HOPPERS CROSSING VIC

4  2  2 

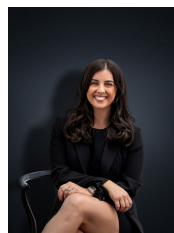
Positioned in an elite and quiet court in the Kingston gardens estate is this showcase family home boasting premium quality fittings and lifestyle that many would only dream of!

Comprising three large fitted bedrooms plus study/potential 4th, downstairs master with ensuite, great sized formal living zones or theatre room and an impressive open plan of family and meals areas plus a great sized kitchen offering plenty of bench and cupboard space. Upstairs offers another separate living area, two bedrooms and an abundance of storage and roof access. Features included ducted heating, evaporative cooling, Italian polished porcelain tiles, high ceilings, infinity hot water service and rainwater tank.

It doesn't stop there... Outside is everything you would ever want!

A double remote garage with drive through access to a

**Building Size** : 27 sqm  
**Land Size** : 696 sqm  
**View** : <https://www.ypa.com.au/7360012>



**Kirsty Cunningham**  
0414 344 475