

23 Butler Court Bacchus Marsh VIC

3  2  2 

Situated in a quiet pocket of the ever-popular Bellevue Estate, this beautiful home has it all. Be greeted by the low maintenance garden, with the entrance graced with quality flooring and leading you into the home.

The home is extremely well catered for with a gourmet kitchen that includes a generous meals area. Timeless and well-appointed kitchen with stylish cabinetry, stainless steel dishwasher, 900mm freestanding oven & stunning tiled splash back.

As you wander through this home, some of the quality features and fittings include quality doors and skirting/architraves. Of the 3 generously proportioned robed bedrooms on offer, the large main suite gives prominence to the ensuite and expansive robe accommodation. Outside is a great alfresco area with eco decking and fire pit with

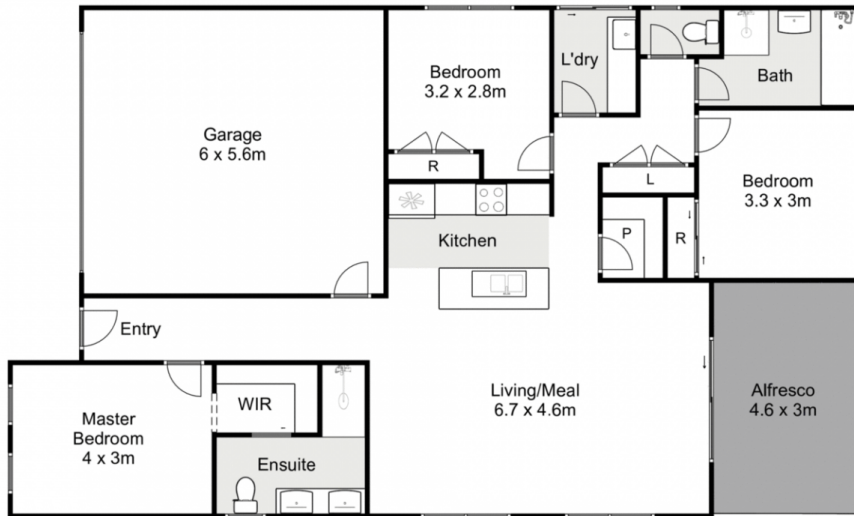
Price : \$ 615,000

Land Size : 434 sqm

View : <https://www.ypa.com.au/7359131>



Jodi Nash
0419 342 120



23 Butler Court, Bacchus Marsh

Whilst every attempt has been made to ensure the accuracy of the floor plan contained here, measurements of doors, windows, rooms and any other items are approximate and no responsibility is taken for any error, omission, or mis-statement. This plan is for illustrative purposes only and should be used as such by any prospective purchaser. The services, systems and appliances shown have not been tested and no guarantee as to their operability or efficiency can be given.

