



11 Sassafra Drive Sunbury VIC

3  2  2 

Here is your chance to secure a beautiful piece of real estate in a tightly held pocket of the glamorous Jacksons Hill Estate. This truly warm and inviting home is everything a family is about, with a great floor plan and multiple living zones to enjoy. Set in the prestigious estate on an incredible block size of 709m² (approximately) & conveniently located within proximity to Sunbury town centre, Sunbury train station, public transport and the popular Galaxy Land park - this spacious, light-filled home is perfect for any growing family.

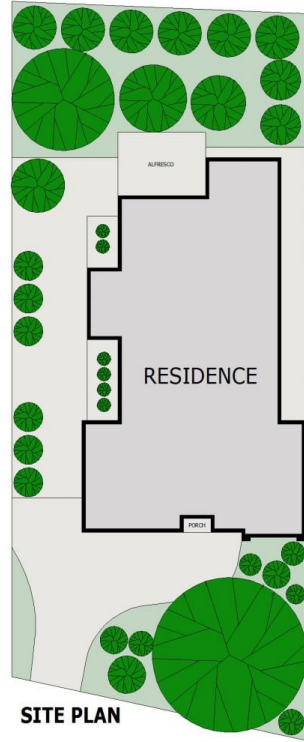
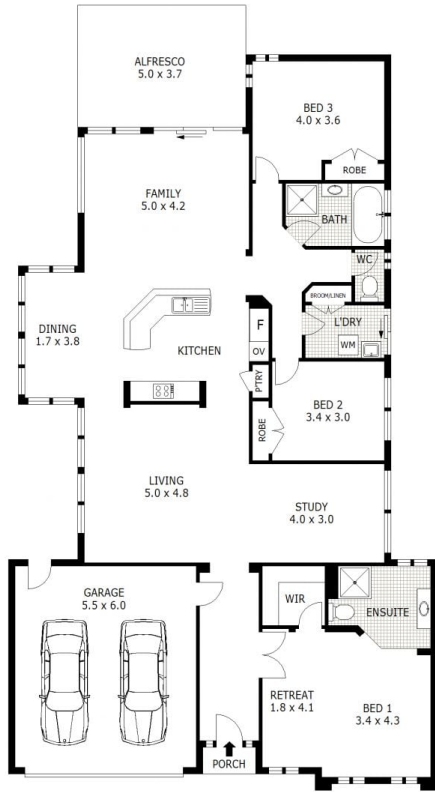
Property features include:

- ? 3 great-sized bedrooms, all with built-in robes
- ? Master suite complete with walk-in robe and ensuite
- ? Open plan kitchen, dining and living room
- ? Kitchen complete with stainless steel appliances (dishwasher, gas cooktop and electric oven), ample

Price : \$ 700,000
Land Size : 709 sqm
View : <https://www.ypa.com.au/7359120>



Patrick Kilkeny
0401 175 248



SITE PLAN

Disclaimer: All images, views and diagrams are indicative only. Dimensions, areas and landscape are indicative and subject to change without notice. Purchasers should check the plans and specifications included in the terms of the contract of sale carefully prior to signing the contract.