

13 Kingsley Drive Sunbury VIC

3  1  2 

Situated on a block of 652m² approximately is this entry-level home with big possibilities! With plenty of off-street parking and wide side gate access to a terrific sized backyard, this well-maintained home is a great investment option or terrific opportunity to get your foot in the door, the possibilities are endless!

Property features include:

- ? 3 bedrooms, master with built-in robe
- ? Central family bathroom with separate toilet
- ? Open living and dining area
- ? Kitchen with ample cupboard and bench space
- ? Study nook
- ? Linen storage throughout
- ? Front formal living with underfloor heating
- ? Laundry with linen storage and direct external access
- ? Rear separate living with fireplace and direct access to

Land Size : 652 sqm

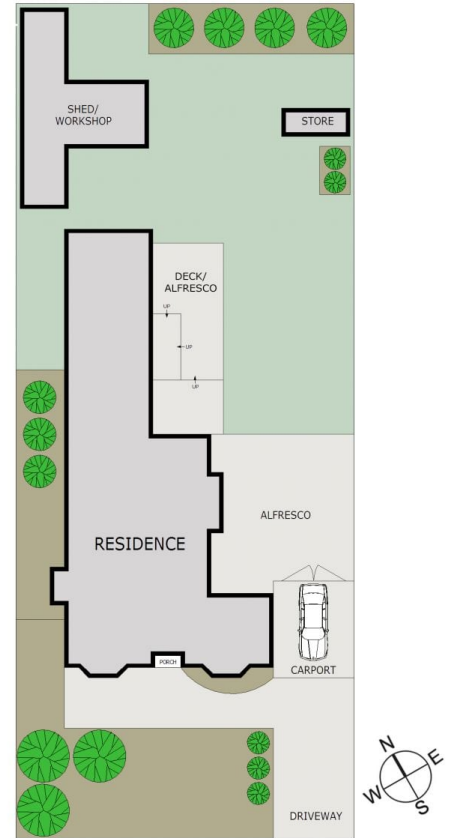
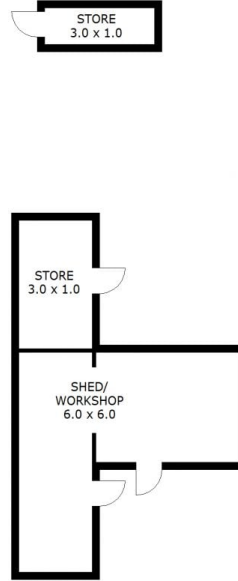
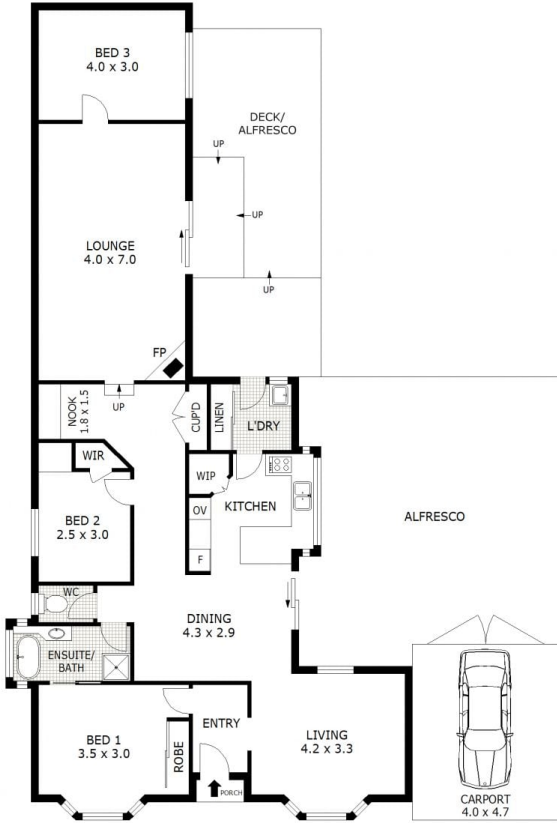
View : <https://www.ypa.com.au/7359117>



Daniel Scarano
0448 735 298



Sebastien Kowlessur
0418 644 323



SITE PLAN