



## 38 Sorbonne Drive Sunbury VIC

2  1  2 

This property presents a great opportunity for the first home buyer entering the market, investor or someone downsizing. Located in the booming Goonawarra estate which is filled with many handy amenities, including a Medical Centre, local shops, public transport, the Goonawarra primary school and the Golf Course, all within walking distance.

Property features include the following:

- 2 bedrooms with built-in robes
- Central bathroom with separate toilet
- Kitchen with ample cupboard storage, gas cooktop with rangehood and an electric oven
- Spacious front formal living room
- Ducted heating and evaporative cooling
- Laundry with direct outdoor access
- Linen storage throughout

**Price** : \$ 417,500  
**Land Size** : 275 sqm  
**View** : <https://www.ypa.com.au/7359116>

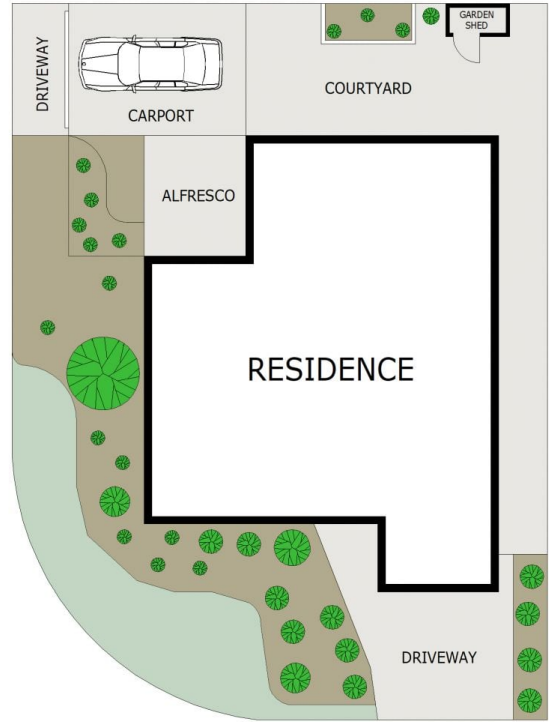
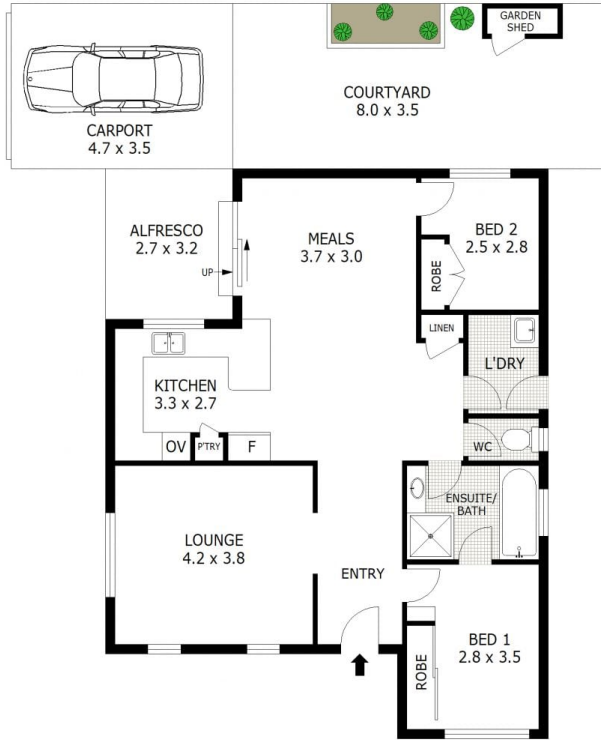


**Daniel Scarano**  
0448 735 298



**Sebastien Kowlessur**  
0418 644 323

# 38 Sorbonne Drive, Sunbury



**SITE PLAN**



Disclaimer: All images, views and diagrams are indicative only. Dimensions, areas and landscape are indicative and subject to change without notice. Purchasers should check the plans and specifications included in the terms of the contract of sale carefully prior to signing the contract.